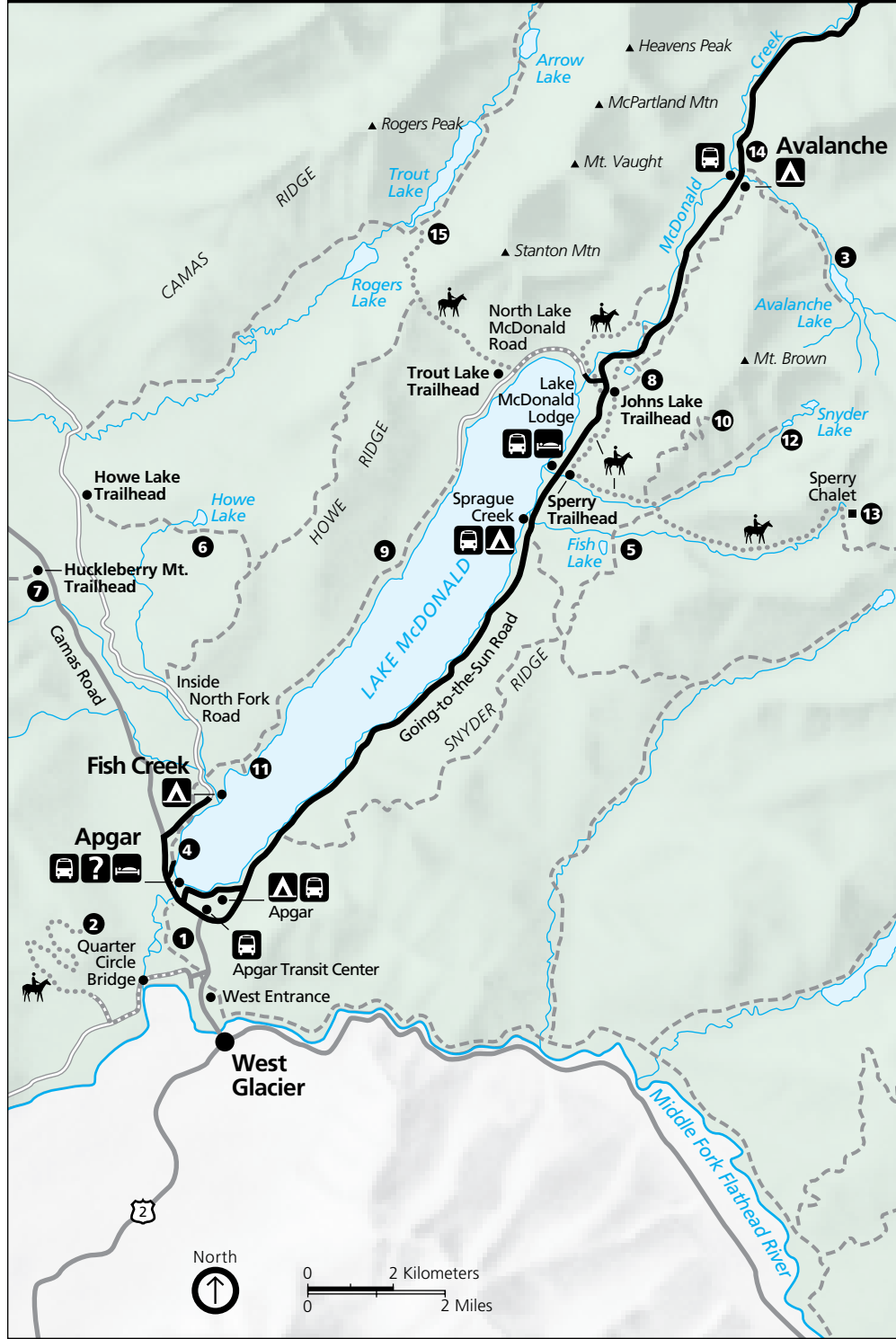


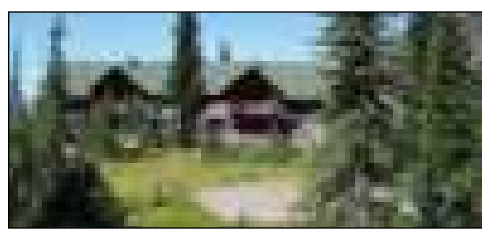
## Lake McDonald Trails



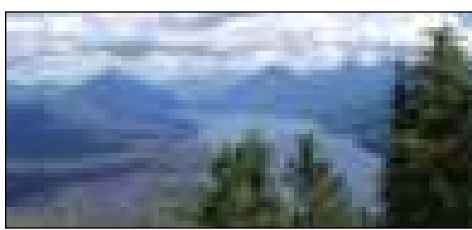
### Legend

- Visitor Center
- Campground
- Paved Roads
- Ranger Station
- Lodging
- Unpaved Roads

Destination	Mileage/Elevation	Trailhead
1 Apgar Bike Path	1.5 mi. - mostly level	Asphalt path 50 yards south of Apgar Visitor Center
2 Apgar Lookout	3.3 mi. - gains 1850 ft.	Take the first left past the West Entrance and follow road 1.5 miles beyond Quarter Circle Bridge.
3 Avalanche Lake	2.0 mi. - gains 500 ft.	Avalanche Gorge Bridge on Trail of the Cedars
4 Fish Creek to Apgar Hiking Path	1.2 mi. - gains 25 ft.	First right past the McDonald Creek Bridge only Apgar accessible by shuttle
5 Fish Lake	2.9 mi. - gains 1000 ft.	Sperry Trailhead
6 Howe Lake	2.0 mi. - gains 240 ft.	Howe Lake Trailhead on the Inside North Fork Road
7 Huckleberry Lookout	6.0 mi. - gains 2725 ft.	Huckleberry Mt. Trailhead on the Camas Road
8 Johns Lake Loop	3.0 mi. - gains 160 ft.	Johns Lake Trailhead
9 Lake McDonald West Shore	7.0 mi. - mostly level	(1) Lakeshore at Fish Creek Campground (2) 2.8 mi. west on North Lake McDonald Road
10 Mt. Brown Lookout	5.3 mi. - gains 4325 ft.	Sperry Trailhead
11 Rocky Point	1.1 mi. - gains 85 ft.	0.2 mi. north of Fish Creek Campground
12 Snyder Lake	4.4 mi. - gains 2147 ft.	Sperry Trailhead
13 Sperry Chalet	6.4 mi. - gains 3432 ft.	Sperry Trailhead
14 Trail of the Cedars	0.7 mi. - accessible	Avalanche Picnic Area
15 Trout Lake	4.2 mi. - gains and drops 2100 ft.	Trout Lake Trailhead

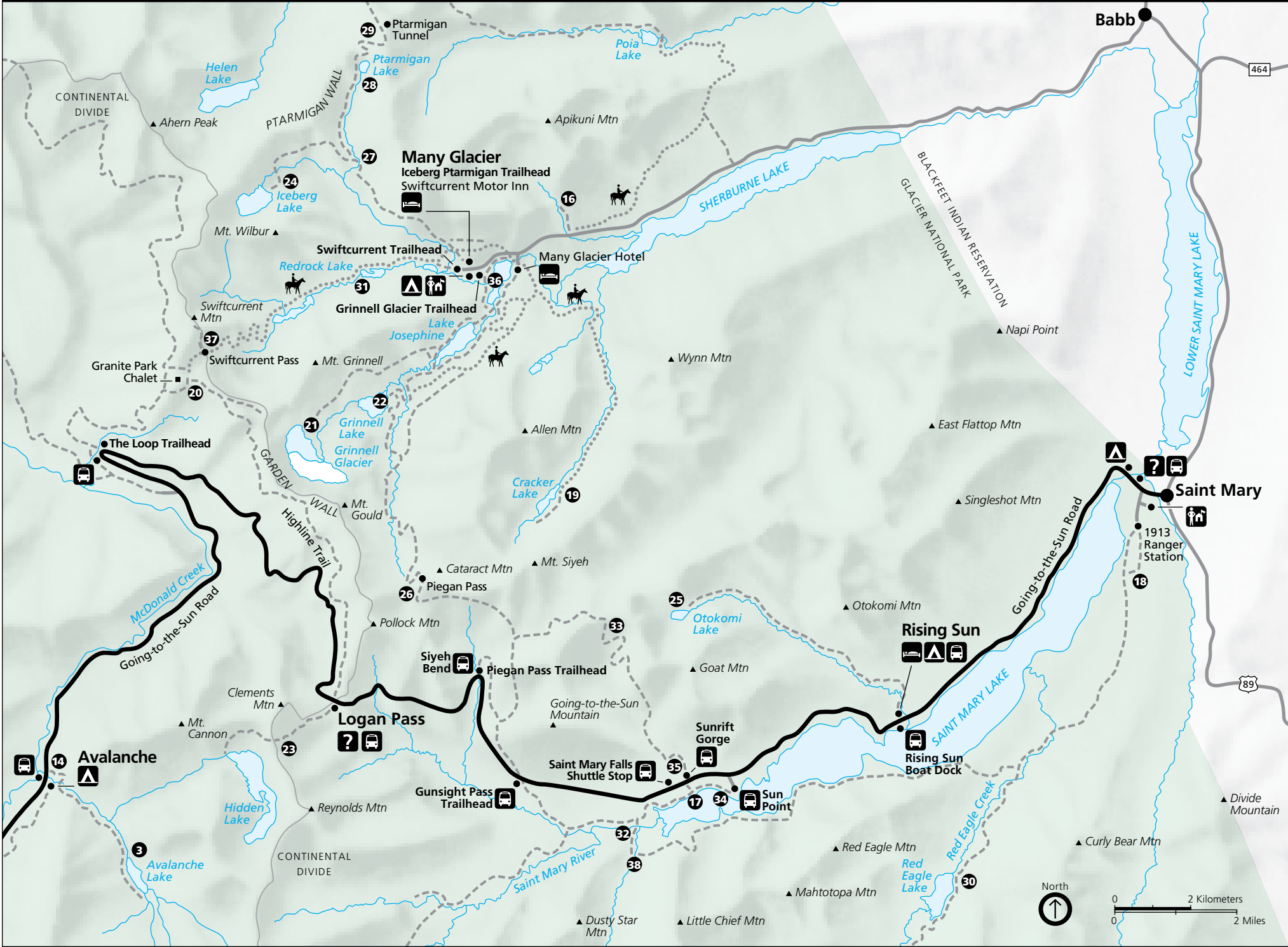


Sperry Chalet



View from Apgar Mountain

## Logan Pass, St. Mary, & Many Glacier Trails

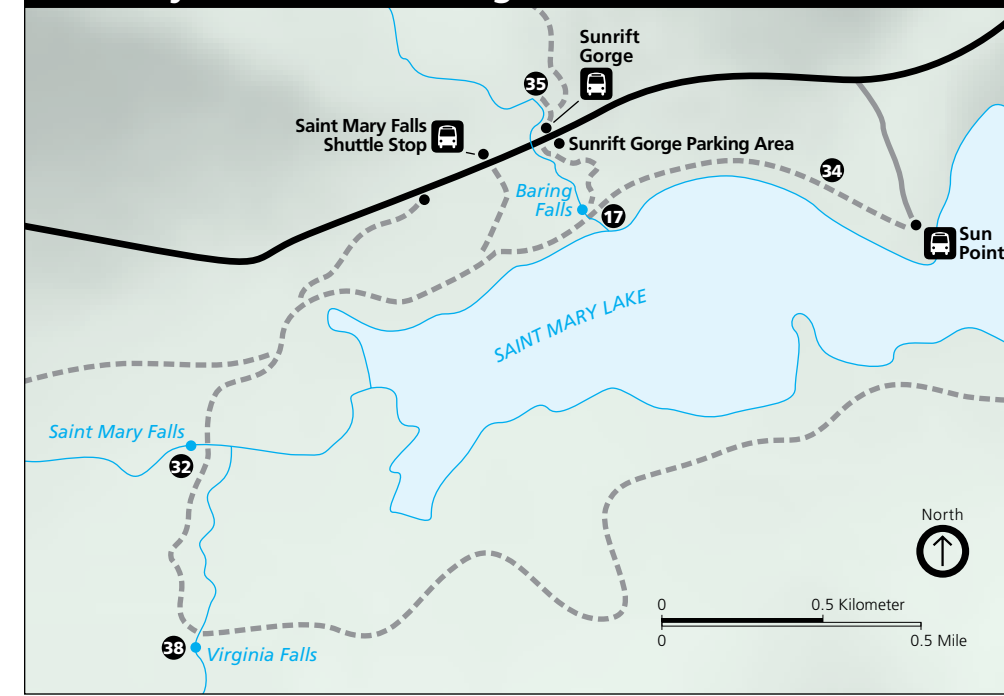


- Trails
- Trail Destination
- Trails listed below with this symbol are easily accessed by the shuttle system
- Heavy Horse Use
- Shuttle Stop

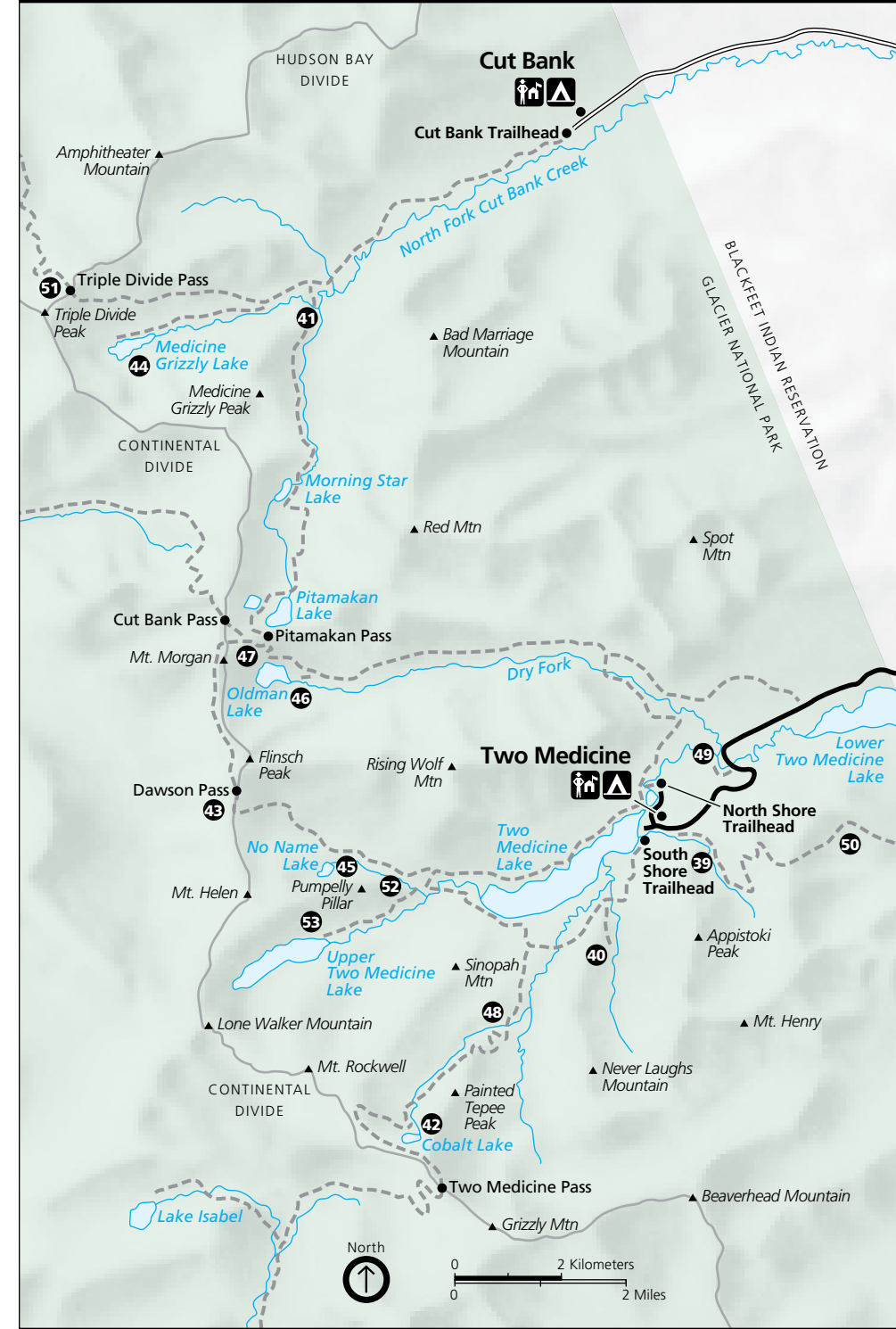
Destination	Mileage/Elevation	Trailhead
16 Apikuni Falls	1.0 mi. - gains 700 ft.	1.1 mile east of Many Glacier Hotel
17 Baring Falls	0.3 mi. - drops 250 ft.	Sunrift Gorge Pullout, 10 miles west of St. Mary
18 Beaver Pond Loop	3.0 mi. - gains 150 ft.	1913 Ranger Station
19 Cracker Lake	6.1 mi. - gains 1400 ft.	South end of the Many Glacier Hotel parking lot
20 Granite Park Chalet	(a) 7.6 mi. - gains 200 ft. (b) 7.5 mi. - gains 2300 ft. (c) 4.0 mi. - gains 2200 ft.	Continental Divide sign at Logan Pass Swiftcurrent Trailhead at Many Glacier Loop Trailhead on the Going-to-the-Sun Road
21 Grinnell Glacier Viewpoint	(a) 5.5 mi. - gains 1600 ft. (b) 3.8 mi. - gains 1600 ft.	Grinnell Glacier Trailhead or Many Glacier Hotel Using concession boat from Many Glacier Hotel
22 Grinnell Lake	(a) 3.4 mi. - gains 60 ft. (b) 0.9 mi. - gains 60 ft.	Grinnell Glacier Trailhead or Many Glacier Hotel Using concession boat from Many Glacier Hotel
23 Hidden Lake Overlook*	1.5 mi. - gains 460 ft. *Additional 1.5 miles further to Hidden Lake dropping 780 ft. from the Overlook	Logan Pass Visitor Center
24 Iceberg Lake	4.8 mi. - gains 1200 ft.	Iceberg Ptarmigan Trailhead
25 Otokomi Lake	5.2 mi. - gains 1900 ft.	Next to Rising Sun Campstore
26 Piegan Pass	(a) 4.5 mi. - gains 1750 ft. (b) 8.3 mi. - gains 2640 ft.	Piegan Pass Trailhead, 15 miles west of St. Mary South end of the Many Glacier Hotel parking lot
27 Ptarmigan Falls	2.6 mi. - gains 700 ft.	Iceberg Ptarmigan Trailhead
28 Ptarmigan Lake	4.3 mi. - gains 1700 ft.	Iceberg Ptarmigan Trailhead
29 Ptarmigan Tunnel	5.2 mi. - gains 2300 ft.	Iceberg Ptarmigan Trailhead
30 Red Eagle Lake	7.6 mi. - gains 200 ft.	1913 Ranger Station parking area
31 Redrock Falls	1.8 mi. - gains 100 ft.	Swiftcurrent Trailhead
32 St. Mary Falls	(a) 0.8 mi. - drops 260 ft. (b) 1.1 mi. - drops 260 ft. (c) 1.5 mi. - mostly level	St. Mary Falls Trailhead, 10.5 miles west of St. Mary St. Mary Falls Shuttle Stop Using concession operated boat from Rising Sun
33 Siyeh Pass Area	(a) 4.7 mi. - gains 2240 ft. (b) 5.6 mi. - gains 3440 ft.	Piegan Pass Trailhead, 15 miles west of St. Mary Sunrift Gorge Pullout, 10 miles west of St. Mary

Destination	Mileage/Elevation	Trailhead
24 Sun Point Nature Trail	0.7 mi. - gentle slopes	Sun Point parking area, 9 miles west of St. Mary
35 Sunrift Gorge	200 ft. - gains 40 ft.	Sunrift Gorge Pullout, 10 miles west of St. Mary
36 Swiftcurrent Nature Trail	2.5 mile loop trail	Grinnell Glacier Trailhead or Many Glacier Hotel
37 Swiftcurrent Pass	6.6 mi. - gains 2300 ft.	Swiftcurrent Trailhead
38 Virginia Falls	(a) 1.5 mi. - drops 260 ft. then gains 285 ft. (b) 1.5 mi. - drops 260 ft. then gains 285 ft. (c) 2.2 mi. - gains 285 ft.	St. Mary Falls Trailhead, 10.5 miles west of St. Mary St. Mary Falls Shuttle Stop Using concession operated boat from Rising Sun

## St. Mary Falls, Sunrift Gorge & Sun Point Trails



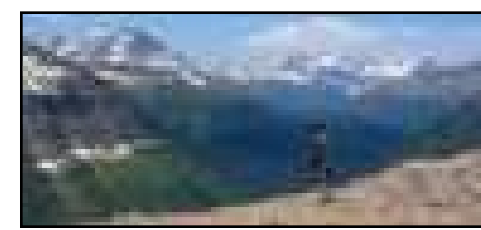
## Two Medicine & Cut Bank Trails



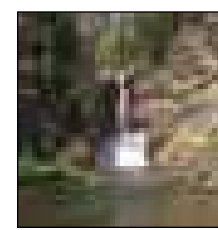
Destination	Mileage/Elevation	Trailhead
39 Appistoki Falls	0.6 mi. - gains 260 ft.	.25 mi. east of Two Medicine Ranger Station
40 Aster Park	1.9 mi. - gains 670 ft.	South Shore Trailhead
41 Atlantic Falls	4.0 mi. - gains 175 ft.	Cut Bank Trailhead
42 Cobalt Lake	5.7 mi. - gains 1400 ft.	South Shore Trailhead
43 Dawson Pass*	6.7 mi. - gains 2450 ft.	North Shore Trailhead
44 Medicine Grizzly Lake	6.0 mi. - gains 540 ft.	Cut Bank Trailhead
45 No Name Lake	5.0 mi. - gains 800 ft.	North Shore Trailhead
46 Oldman Lake	5.7 mi. - gains 1500 ft.	North Shore Trailhead
47 Pitamakan Pass*	6.9 mi. - gains 2400 ft.	North Shore Trailhead
48 Rockwell Falls	3.4 mi. - gains 375 ft.	South Shore Trailhead
49 Running Eagle Falls	0.3 mi. - accessible	Running Eagle Falls Trailhead
50 Scenic Point	3.1 mi. - gains 2350 ft.	.25 mi. east of Two Medicine Ranger Station
51 Triple Divide Pass	7.2 mi. - gains 2380 ft.	Cut Bank Trailhead
52 Twin Falls	(a) 3.8 mi. - gains 75 ft. (b) 0.9 mi. - gains 75 ft.	North Shore Trailhead Using concession boat near South Shore Trailhead
53 Upper Two Medicine Lake	(a) 5.0 mi. - gains 350 ft. (b) 2.2 mi. - gains 350 ft.	North Shore Trailhead Using concession boat near South Shore Trailhead



Beargrass



Dawson Pass



Running Eagle Falls

\* Dawson Pass and Pitamakan Pass can be combined to form a 18.8 mi. loop.